

1. Design Variant: Flood Impact

Fig 1: Expected damages for a 2000 year flood on the Integrated Floodwall

1.1 Flood damage distribution

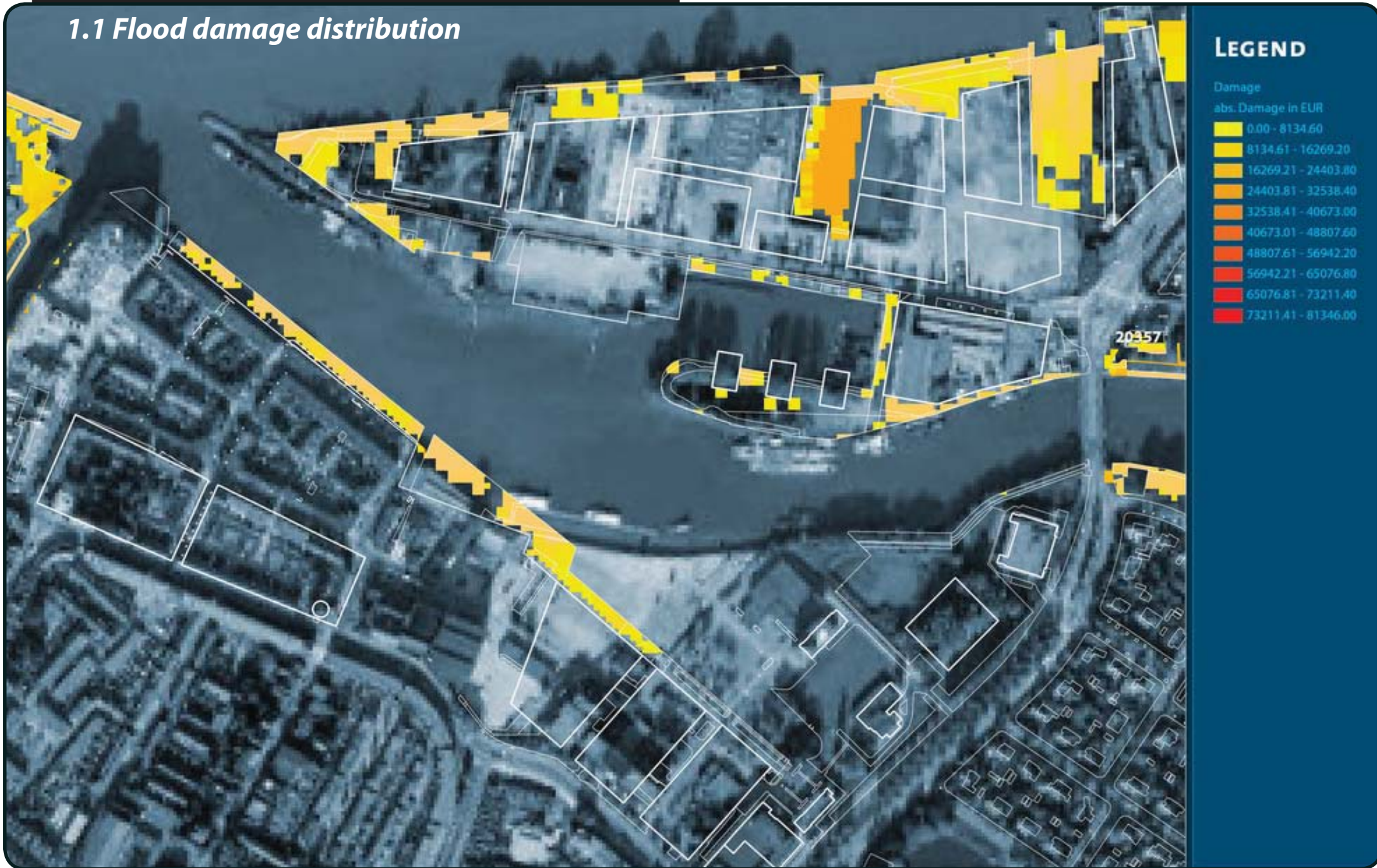
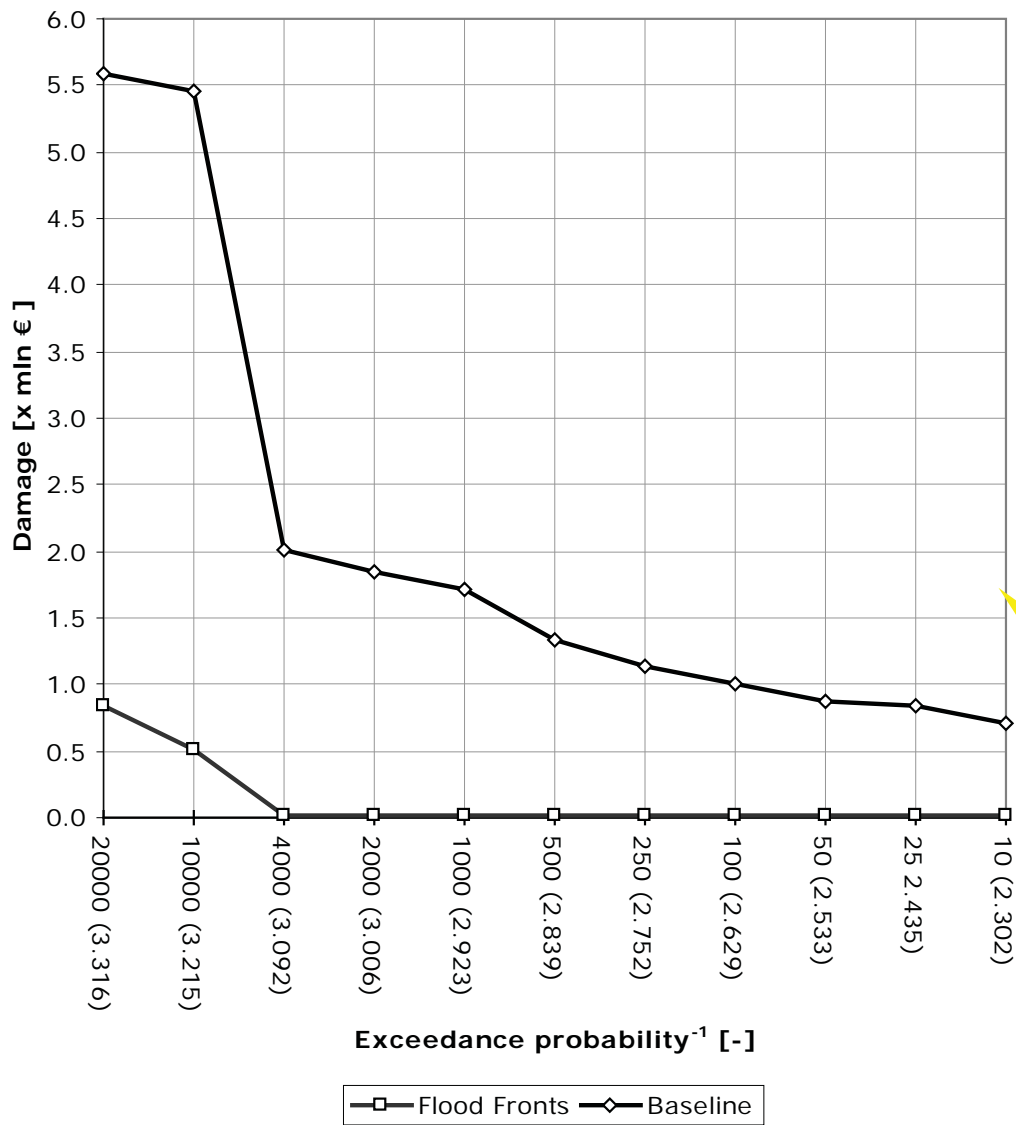


Fig 2: Expected damages for a 2000 year flood on the Waterstairs design



Fig 3: Expected damages for the Integrated Floodwall design

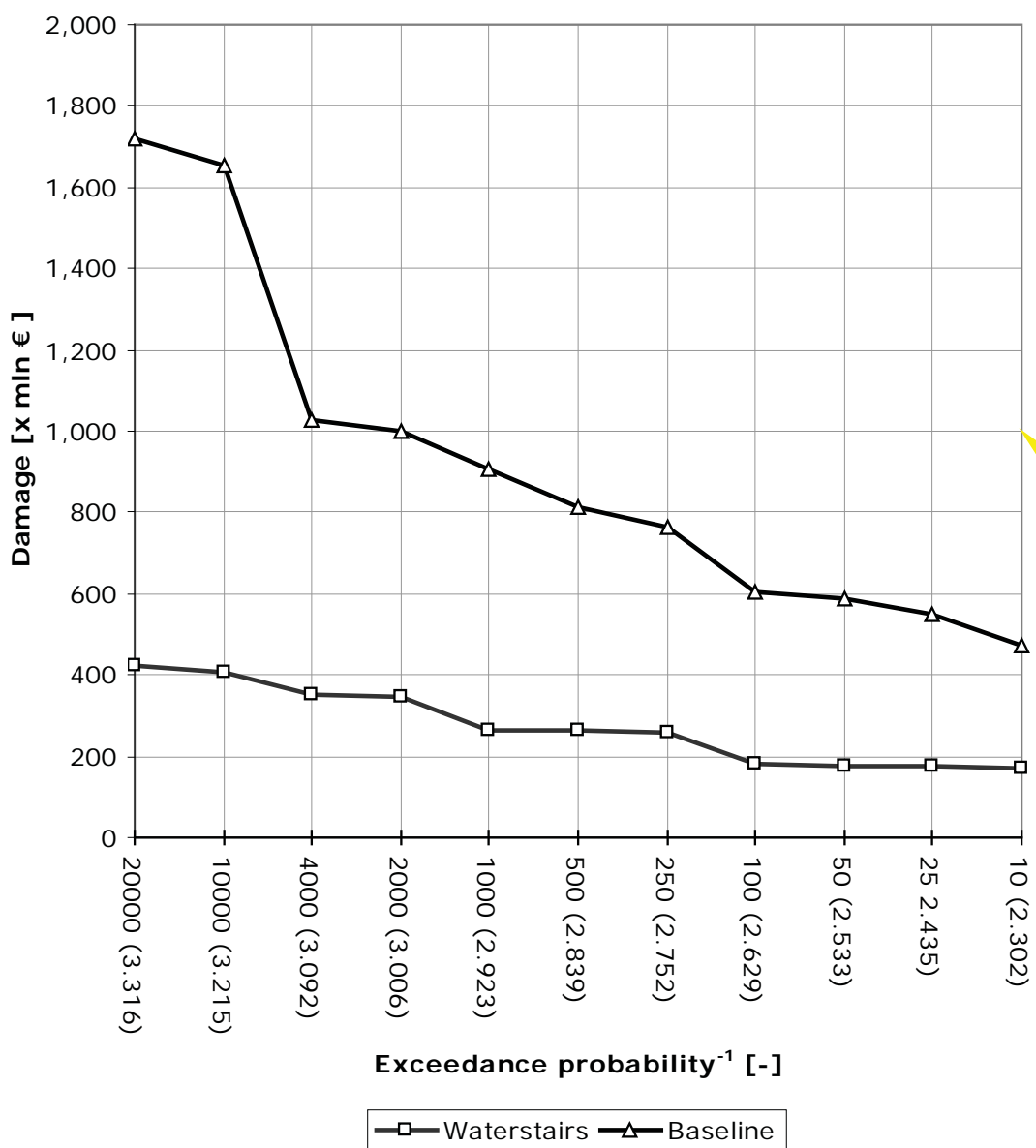
1.2 Aggregate Damage Levels for the Integrated Floodwall design with and without failure



EDamage curves (aggregate levels) for the Integrated Floodwall design for annual EPs between 10⁻¹ and 20000⁻¹. The baseline level shows the potential damage during failure of all flood proofing measures.

Fig 4: Expected damages for the Waterstairs design

1.3 Aggregate Damage Levels for the Waterstairs design with and without failure



EDamage curves (aggregate levels) for the Waterstairs design for annual EPs between 10⁻¹ and 20000⁻¹. The baseline level shows the potential damage during failure of all flood proofing measures.